

THERMO SHIELD[®]

thermal insulation coating



Luther
College

Roof Restoration



Rust Conversion | Thermal Insulation | Asset Protection



Luther College is a private school located in Croydon, in Melbourne's eastern suburbs.

Opening in 1964, many of the schools galvanised steel roofs have now developed widespread surface rusting & many areas of advanced corrosion.



Rust blooms began to first appear in 2009:



By 2014 – roof sheet corrosion had become severe & full replacement was imminent:



BEFORE & AFTER examples:

To finish I'll present the same location, at various stages of the restoration, coating system:

Before:



Rust Conversion:



Completed coating system:



* **BEFORE** – original condition



* **DURING** – after surface preparation, rust conversion coating



* **DURING** – First coat (White Thermoshield)



* **AFTER** – 1 coat white | 2 x shale grey coats



* **BEFORE** – original condition



* **DURING** – after surface preparation, rust conversion coating



* **DURING** – First coat (White Thermoshield over rust converter)



* **AFTER** – 1 coat white | 2 x shale grey coats



* **BEFORE** – original condition



* **DURING** – after surface preparation, rust conversion coating



* **DURING** – First coat (White Thermoshield)



* **AFTER** – 1 coat white | 2 x shale grey coats



* **BEFORE** – original condition



* **DURING** – post rust conversion, half way through 1st coat (white)



* **DURING** – Second coat (shale grey over white)



* **AFTER** – 1 coat white | 2 x shale grey coats



* **BEFORE** – original condition



* **AFTER** – completed coating 'system'



* 'Before' – prior to any work



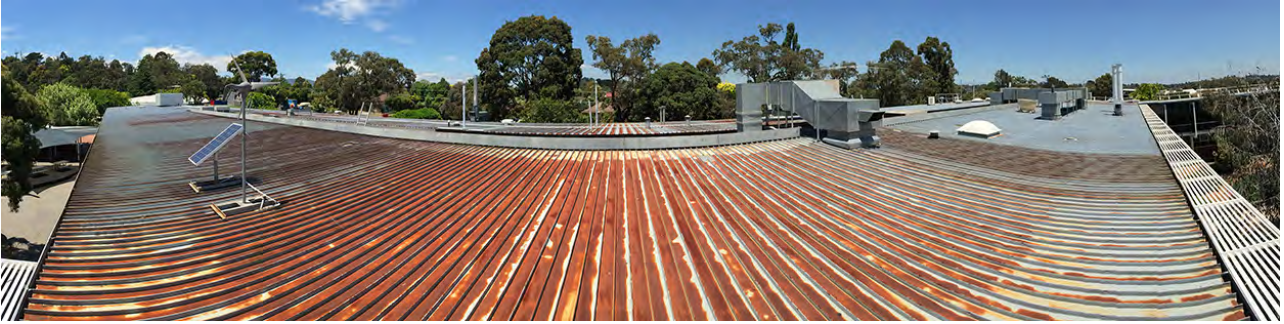
* 'During' – rust conversion



* 'After' – like new appearance



- Before:



- Rust conversion:



- First coat – Thermoshield WHITE:



- Second Coat – Thermoshield 'Shale Grey':



- Third Coat – Thermoshield 'Shale Grey'

