



## Kew Recreation Centre Roof Restoration



Corrosion Control | Waterproofing | Thermal Insulation

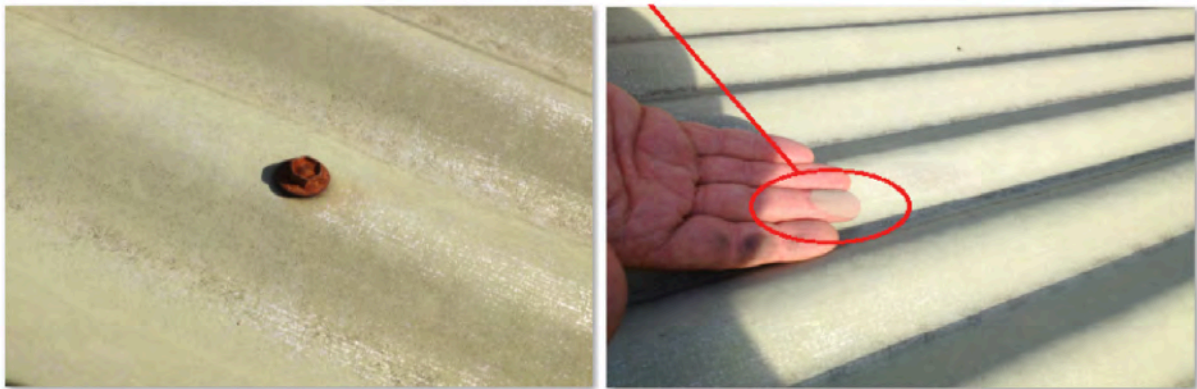




**Rust Conversion | Restoration | Thermal Insulation | Asset Protection**

The roof surface at Kew Recreation Centre was heavily weathered & beginning to show signs or surface rust, due to the rust tech screws.

We were very surprised how “chalky” the colour bond sheeting had become. If you lightly rubbed the surface with your hands, you would rub off much of the coating, revealing the metal beneath:



A major concern is that whilst it may take many years for surface rust to appear but once visible, the further corrosion becomes highly accelerated. Which is probably the stage to roof had now reached.

You can see from the below photos that the heavily rusted tech screws had spread to the roof sheeting itself:



Kew Recreation Centre  
City of Boroondara

Below are a variety of “before” photos:

\*rust developing in channels\*



\* patrons safely barricaded & warnings \*

\* overspray concerns eliminated \*



## **Power washing:**

Hitting the heavily weathered, chalky colour bond sheeting at 3,600psi resulted in a very noticeable difference. The result of the extensive cleaning will result in perfect adhesion.

You can see from the below photo the before & after effect of the power washing:



Power washing from static line & harness – rope set to safe length to avoid fall:



\*Large area barricaded. No debris to fall near patrons



\*Power washer, with mandatory fire extinguisher



### **Rust Conversion:**

All of the heavily rusted tech screws were coated with rust converter to ensure the Thermoshield coating would adhere to a stable metal surface, rather than rust which would resurface in days.

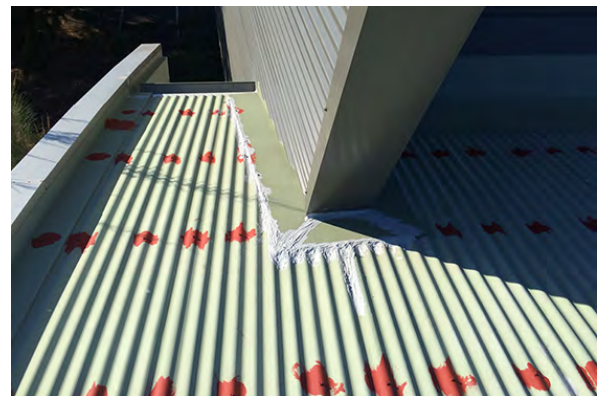
Below is a close up of the process:



That was repeated to each & every screw:



New anchor points were masked up & in addition, old anchor points & sheet joins were heavily waterproofed:

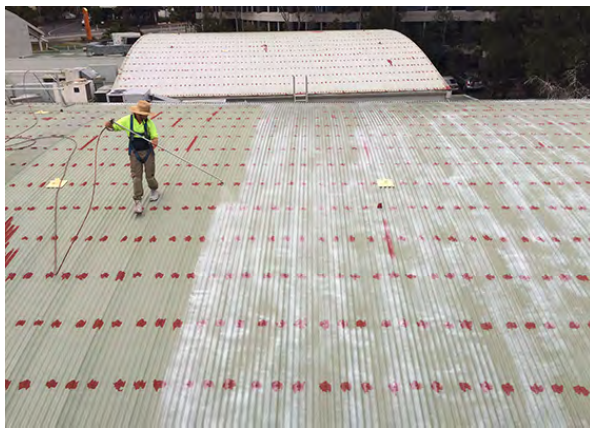


### **Etch primer coat:**

The etch primer coating is essential for maximum adhesion over colourbond sheets.

The power washing process 'took off' a significant amount of the remainder of the chalky paint however, with a long term warranty issued, we take the added precaution of applying the etch primer to ensure longevity.

The 2 part etch primer goes on a white/green (or minty) colour & dries clear.



### **THERMOSHIELD – THERMAL CERAMIC COATING**

Thermoshield coating is applied in order to reseal the metal and prolonging its life.

Once the colour bond coating has been worn through, all this means is that the bare metal is seeing daylight for the first time. Replacing the roof & throwing away the underlying steel is a total waste of good steel & good money.

Below are photos of the coating process –

First coat in white:



Second coat:



**COMPLETED COATING:**



**BEFORE & AFTER examples:**

Tech screw rust conversion & sealing – close up

Before:



After:



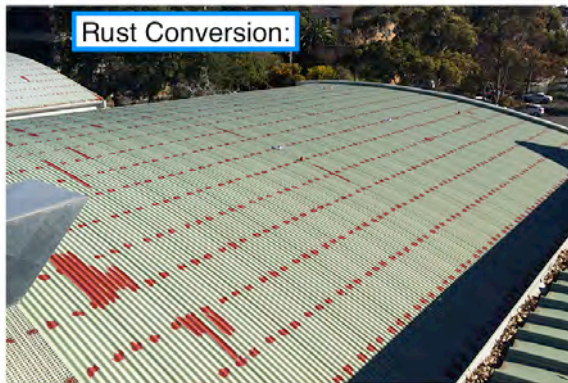
Coating stages:



Before | During | After:



Before | During | After:



## PROJECT COMPLETION

We're delighted with the end result & confident the restoration will stand the test of time due to the thorough preparations & various processes carried out, prior to the Thermoshield ceramic coating being applied.

Kind regards

**GAVIN BATTY**  
Managing Director

Mobile: 0417 563 955

Email: [gavin@thermoshield.com.au](mailto:gavin@thermoshield.com.au),

Website: [thermoshield.com.au](http://thermoshield.com.au)