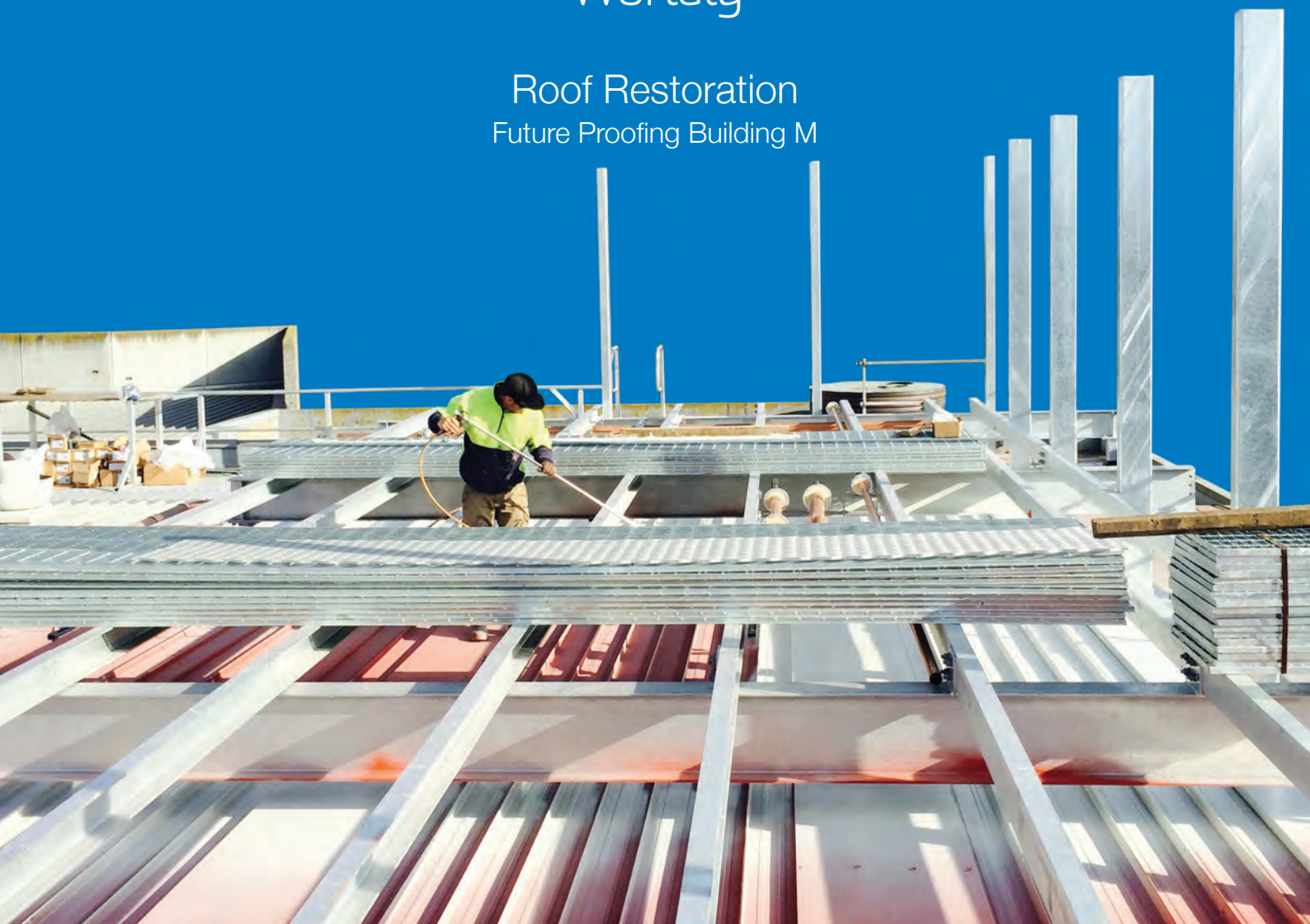


THERMO SHIELD®

thermal insulation coating



Roof Restoration Future Proofing Building M



Rust Conversion | Thermal Insulation | Asset Protection





FUTURE PROOFING RESTORATION

Rust Conversion | Insulation Coating | Asset Protection

Building M was in the midst of major construction works.

Part of the works involved installing a platform for a large air conditioning system to be installed on. The concern was that the ageing roof was beginning to show signs of deterioration such as rust bloom.

By applying [3 coats] of the Thermoshield ceramic coating, the underlying steel is starved of environmental exposure, which will significantly prolong the life of the roof.

With scheduled maintenance, the expensive task of roof replacement will be avoided well into the future.

The below aerial photo shows building M:



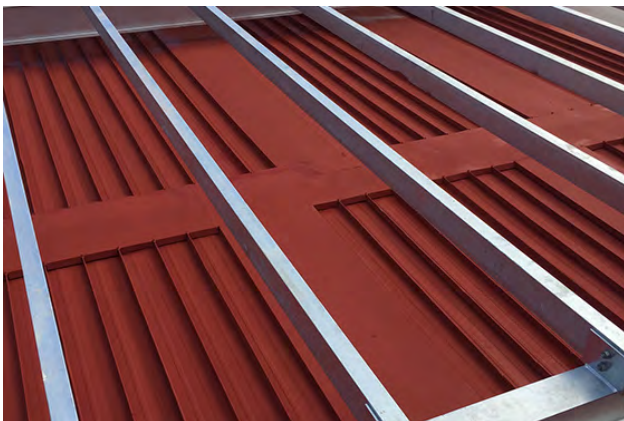
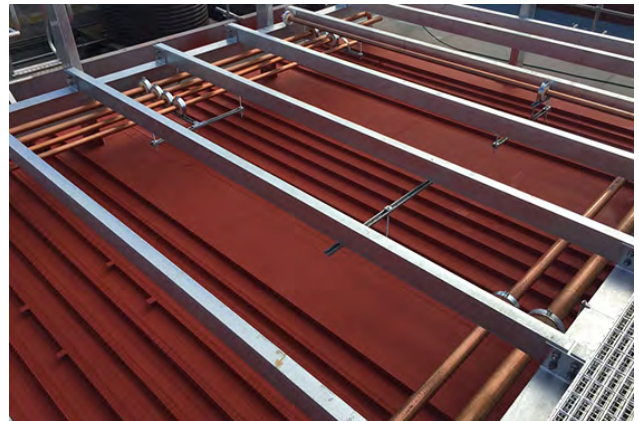
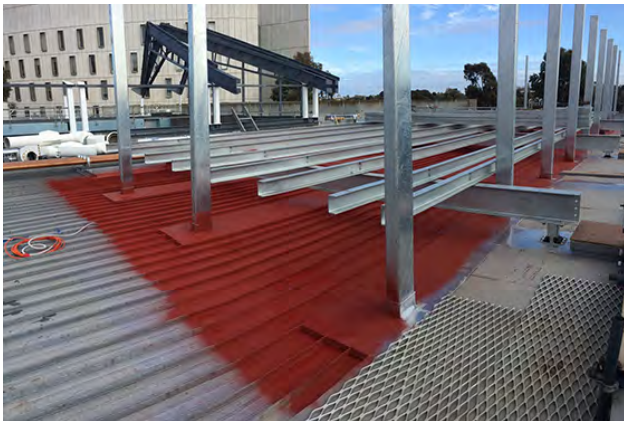
Coating process would comprise of:

- Power washing & roof preparation (3,500psi minimum)
- Rust Inhibitor etch primer coating
- **3 coats of Thermoshield** (250 micron per coat)
- 10 year warranty

Coating Process:

Following the high pressure washing of the roof sheets, a rust inhibitor etch primer was applied to the sheeting.

The etch primer is a vivid red, which makes it extremely clear to see areas coated in preparation for top coats:

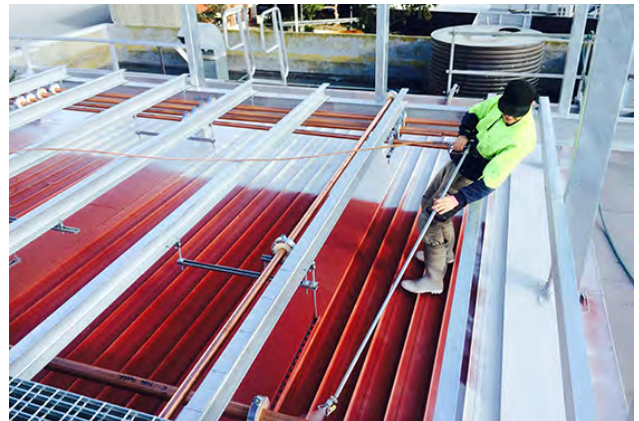
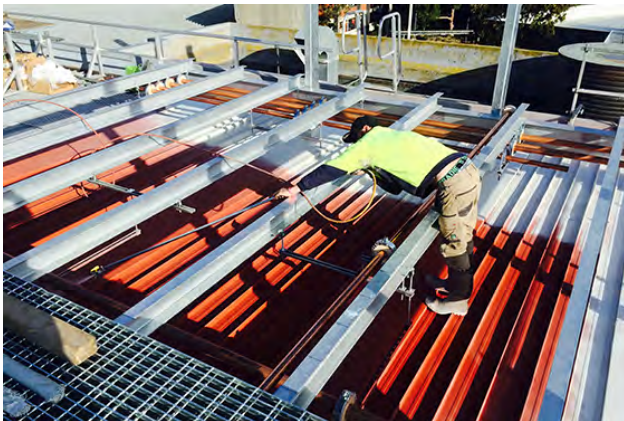


THERMOSHIELD CERAMIC COATING –

The Thermoshield coating creates a thick, non-permeable membrane that acts to encase the converted metal, eliminating any and all environmental exposure therefore, eliminating any chance of future corrosion.

In essence, if we are able to find no visual evidence of the vivid red etch priming coat, we can be confident of the coating has provided an un-interrupted '*protective blanket*' for future proofing.

Thermoshield over rust inhibitor etch primer:



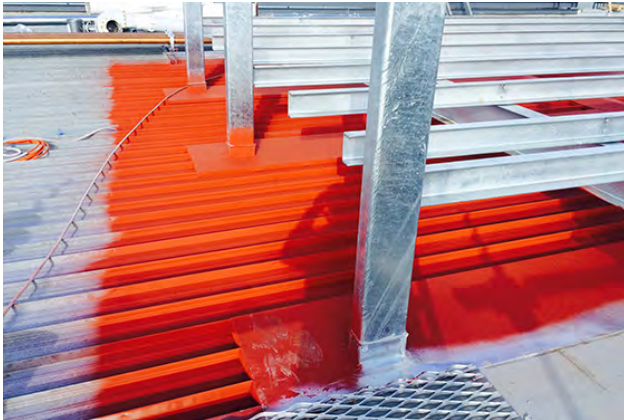
Rust inhibitor etch primer:



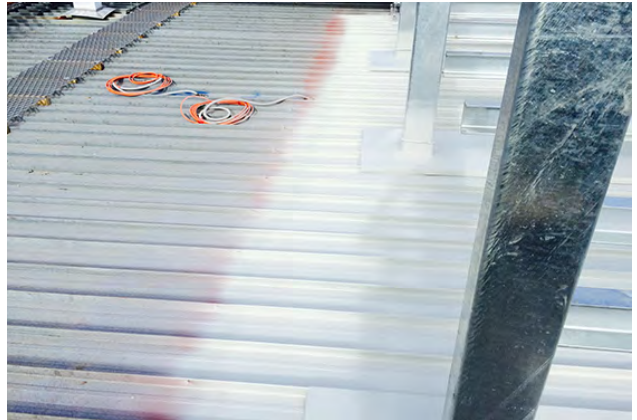
Thermoshield (shale grey):



Rust inhibitor etch primer:



Thermoshield (shale grey):



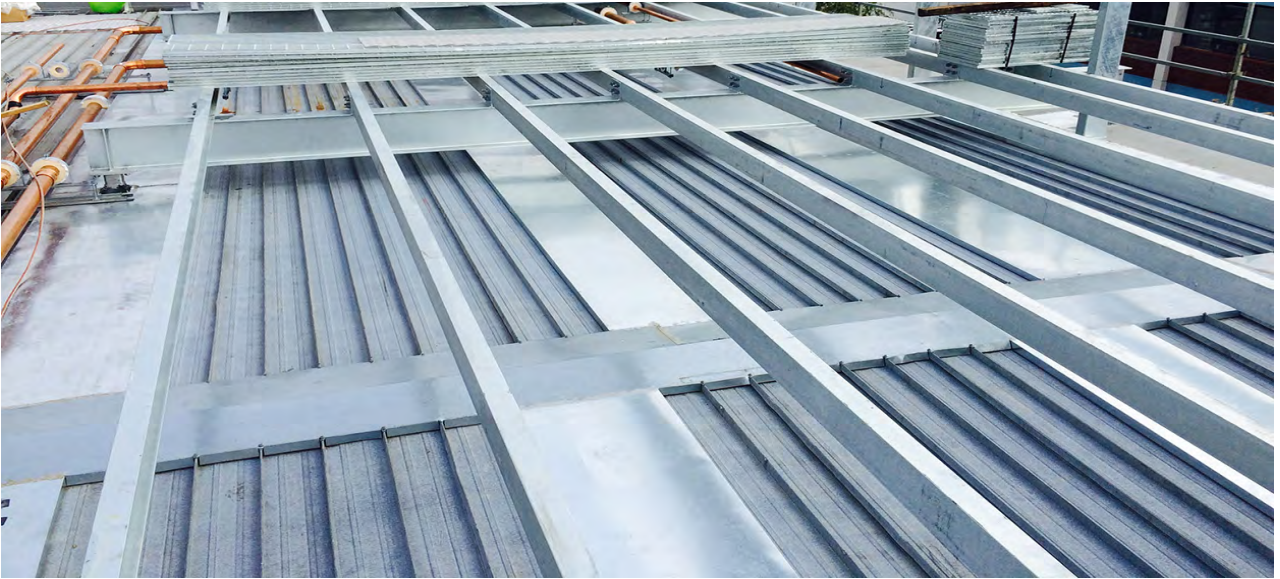
COMPLETED SHOTS:

The vivid red primer coat makes a sound base for ensuring top coat(s) coverage is complete & comprehensive. If no red can be seen, it proves an unbroken protective 'blanket' has been achieved by the Thermoshield ceramic coating:



Despite very difficult conditions, near to the depths of winter... We were able to successfully apply a thick protective coating prior to the A/C installations. A result we are very pleased with.

BEFORE | DURING | AFTER



BEFORE | DURING | AFTER

